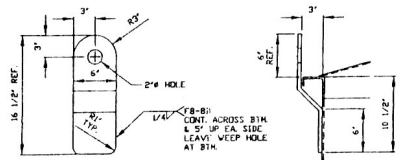
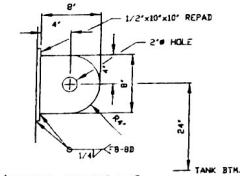


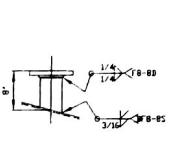
DETAIL BASE PLATE
MATERIAL: 1/2" THK. A36
SCALE: 1 1/2" = 12"



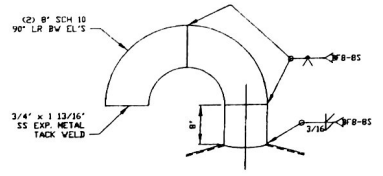
DETAIL LEFT LUG
ONE REQUIRED
TRAFFIC HGR. TO LOCATE
1/2" THK. A240-304 CLUG & REPAD
SCALE: 1 1/2" = 12"



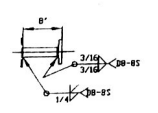
DETAIL TRAILING LUG
ONE REQUIRED
TRAFFIC HGR. TO LOCATE
1/2" THK. A240-304 CLUG & REPAD
SCALE: 1 1/2" = 12"



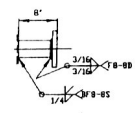
DETAIL NOZ. 'E'
SCALE: 1 = 12
CUT 4" SCH 40 PIPE @ 8 5/8" LG



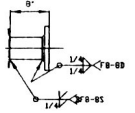
DETAIL NOZ. 'F'
SCALE: 1 = 12
CUT 6" SCH 40 PIPE @ 8 5/16" LG



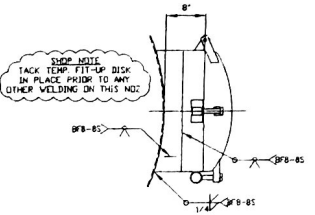
DETAIL NOZ. 'B & C'
SCALE: 1 = 12
CUT (2) 1 1/2" SCH 40 PIPE @ 8" LG. EA.



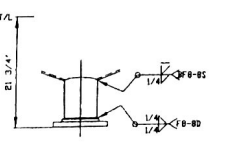
DETAIL NOZ. 'D'
SCALE: 1 = 12
CUT 3" SCH 40 PIPE @ 8" LG



DETAIL NOZ. 'G'
SCALE: 1 = 12
CUT 4" SCH 40 PIPE @ 8" LG



DETAIL NOZ. 'K'
SCALE: 1 = 12



DETAIL NOZ. 'A'
SCALE: 1 = 12
CUT 6" SCH 40 PIPE @ 9" LG

08018
CIE: ETHANOL
Canton, Illinois
09.04.07
171-159504
018002006

CERTIFIED PRINT CHECK
CHK. BY: *Mark Andrew*
DATE: 9-6-07
LURGI, INC.

CERTIFIED AS BUILT DRAWING
KENNEDY TANK & MFG. CO., INC.
INDIANAPOLIS, INDIANA
BY: *Mark Andrew* DATE: 3/29/07

MAX ANDREW
MILWAUKEE
BY DESIGN
DATE: 11-30-04

MATERIALS	
ROOF:	5/16" THK. A240-304
SHELL:	1/4" THK. A240-304
BOTTOM:	5/16" THK. A240-304
FLANGES:	A192-304
REPADS:	N/A
NOZZLE NECKS (PIPE):	A312-304
NOZZLE NECKS (PLATE):	A240-304
WELD FITTINGS:	A403-304
VESSEL SUPPORT:	A36
STRUCTURAL:	A479-304, A36
BOLTS:	A307 ZINC PLATED
NUTS:	A307 ZINC PLATED
GASKETS:	1/8" VITON

DESIGN CONDITIONS	
DESIGN PRESSURE (IN. W.C.):	20 INT./5 EXT.
AT DESIGN TEMP. (°F):	150
OPERATING PRESSURE (IN. W.C.):	ATM
AT OPERATING TEMP. (°F):	80
CORROSION ALLOWANCE:	1/8"
LABEL:	KTAM (PER ASME VIII & API 650 WHERE APPL.)
STRESS RELIEVE:	NONE
RADIOGRAPH:	NONE
JOINT EFF.:	.70
HYDRO TEST:	N/A
AIR TEST:	2-3 PSIG
CUSTOMER INSPECTION:	YES
MTR COPIES:	1 KTAM, 1 CUSTOMER
NAMEPLATE FACSIMILE:	YES
SEISMIC & WIND DESIGN:	PER IBC 2003

WEIGHTS & CAPACITIES	
EST. CAPACITY, GALS.	
PER FT. STRAIGHT SIDE:	229.5
TOTAL (TD TO TOP ANGLE):	2,390
SP. GR. OF CONTENTS:	1.05
EST. WT. OF CONTENTS (LBS):	20,842
EST. WT. OF VESSEL (LBS):	4,000
TOTAL EST. WT. (LBS):	24,842

FITTING SCHEDULE			
NO.	SIZE	USE (TYPE/THICKNESS)	REMARKS
A	1"	6"/150#/RF/SD/SCH 40	DISCHARGE
B	1"	1/2"/150#/RF/SD/SCH 40	TEMPERATURE
C	1"	1/2"/150#/RF/SD/SCH 40	TEMPERATURE
D	1"	3"/150#/RF/SD/SCH 40	RECYCLE/INLET
E	1"	1/4"/150#/RF/SD/SCH 40	INLET
F	1"	8"/SCH 40 PIPE	LOUSENECK VENT
G	1"	1/4"/150#/RF/SD/SCH 40	OVERFLOW
H	1"	24"/CL75/TT SWINGBOLT	SIDE MANWAY LEVEL
K	1"	3"/150#/RF STUD PAD	LEVEL

NOTES	
1.	BOLT HOLES TO STRADDLE LINE PARALLEL TO 0°/180° AND 90°/270° CENTERLINES.
2.	FABRICATOR SHALL PROVIDE GASKETS, BOLTS, AND HEX NUTS FOR ALL MATING PARTS INCLUDING BLIND FLANGES WHERE NOTED.
3.	✓ INDICATES MACHINE FINISHED SURFACE.
4.	INSULATION SUPPORTS ARE NOT REQUIRED.
5.	FABRICATOR SHALL PROVIDE PROTECTIVE SHIELDS FOR ALL FLANGES AND OPENINGS.
6.	SHOP TOLERANCES DIMENSIONS ± 1/8" NOZZLES ± 1/2 DEGREE
7.	SANDBLAST: INTERNAL: NONE (PREFER WASH) EXTERNAL: SS BRUSH STABILBLAST EXTERNAL CS: SSPC-SP6
8.	LINING: NONE
9.	PAINT: ONE COAT INTERZINC 22 AT 2-3 MILS DFT. (CS ONLY)
10.	RADIUS WELDS & EDGES 1/8" MINIMUM

KENNEDY TANK & MANUFACTURING CO., INC.	
833 EAST SUMNER AVENUE INDIANAPOLIS, INDIANA 46227	
REVISIONS	DESCRIPTION
NO. DATE BY	75" I.D. x 10'-0" S-S ACID WASH TANK
12/01/06 M.L.M.	FOR: LURGI PSI / CIE, INC. CANTON, IL
3/29/07 T.L.P.	
1	ISSUED
2	REVISED
3	REVISED
4	REVISED
5	REVISED
6	REVISED
7	REVISED
8	REVISED
9	REVISED
10	REVISED
11	REVISED
12	REVISED
13	REVISED
14	REVISED
15	REVISED
16	REVISED
17	REVISED
18	REVISED
19	REVISED
20	REVISED
21	REVISED
22	REVISED
23	REVISED
24	REVISED
25	REVISED
26	REVISED
27	REVISED
28	REVISED
29	REVISED
30	REVISED
31	REVISED
32	REVISED
33	REVISED
34	REVISED
35	REVISED
36	REVISED
37	REVISED
38	REVISED
39	REVISED
40	REVISED
41	REVISED
42	REVISED
43	REVISED
44	REVISED
45	REVISED
46	REVISED
47	REVISED
48	REVISED
49	REVISED
50	REVISED
51	REVISED
52	REVISED
53	REVISED
54	REVISED
55	REVISED
56	REVISED
57	REVISED
58	REVISED
59	REVISED
60	REVISED
61	REVISED
62	REVISED
63	REVISED
64	REVISED
65	REVISED
66	REVISED
67	REVISED
68	REVISED
69	REVISED
70	REVISED
71	REVISED
72	REVISED
73	REVISED
74	REVISED
75	REVISED
76	REVISED
77	REVISED
78	REVISED
79	REVISED
80	REVISED
81	REVISED
82	REVISED
83	REVISED
84	REVISED
85	REVISED
86	REVISED
87	REVISED
88	REVISED
89	REVISED
90	REVISED
91	REVISED
92	REVISED
93	REVISED
94	REVISED
95	REVISED
96	REVISED
97	REVISED
98	REVISED
99	REVISED
100	REVISED